



# MONTHLY MEMBERSHIP PROGRESS REPORT

Results as of: 6/30/2015

Multiple District 7

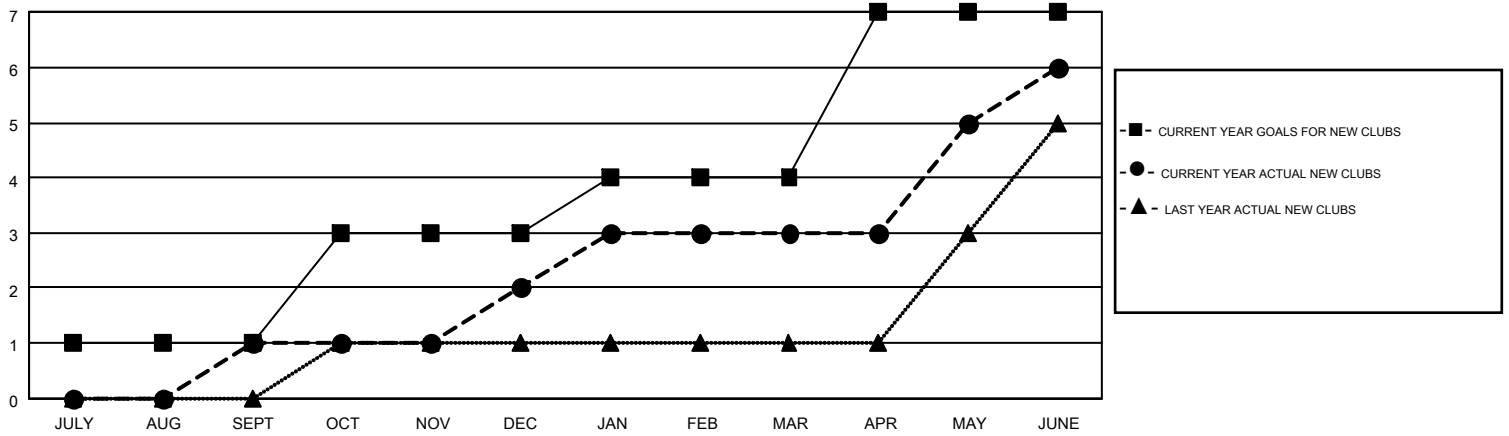
LOCATION: ARKANSAS

GMT: HAL GRIFFIN

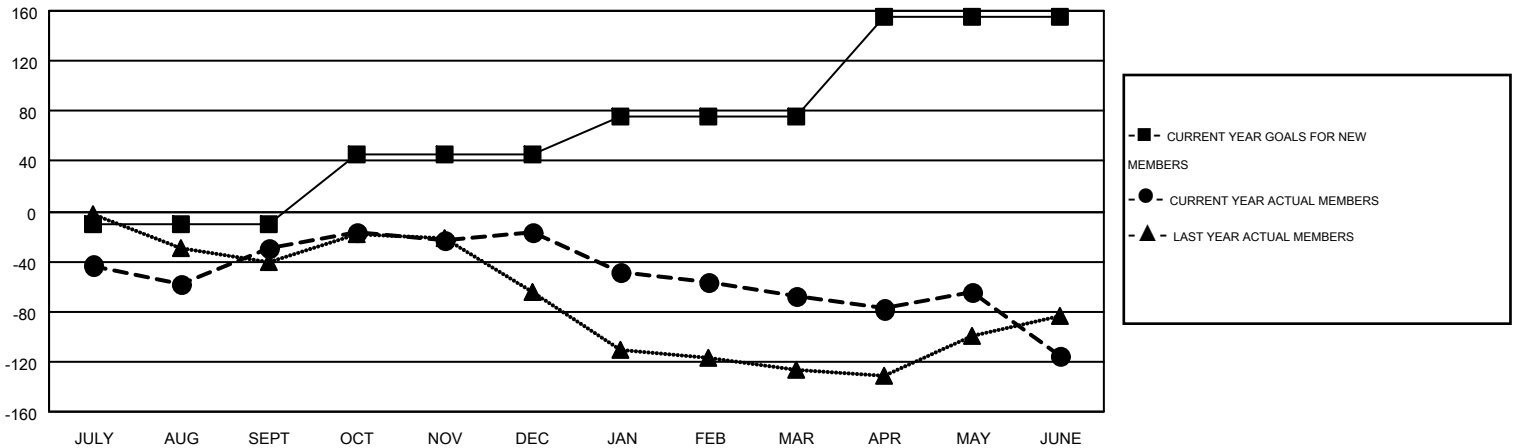
GMT CA 1

Clubs					Members				
RESULTS FOR 2014-2015					RESULTS FOR 2014-2015				
QUARTER	NEW CLUB GOAL	NEW CLUBS	DROPPED CLUBS	NET GAIN/LOSS	QUARTER	NEW MEMBER GOAL	CHARTER AND NEW MEMBERS ADDED	DROPPED MEMBERS	NET GAIN/LOSS
JULY/AUG/SEPT	1	1	6	-5	JULY/AUG/SEPT	-10	151	181	-30
OCT/NOV/DEC	2	1	0	1	OCT/NOV/DEC	55	91	78	13
JAN/FEB/MAR	1	1	2	-1	JAN/FEB/MAR	30	90	141	-51
APR/MAY/JUNE	3	3	3	0	APR/MAY/JUNE	80	162	210	-48

GOALS AND ACTUAL NEW CLUBS CUMULATIVE



GOALS AND ACTUAL MEMBERS CUMULATIVE



DROPPED CLUBS: 11	106 CLUBS OF 151 ADDED 1 OR MORE NEW MEMBERS	<u>GENDER DISTRIBUTION</u>	
<u>DROPPED MEMBERS</u>		MALE	2,144 (65.15%)
DECEASED	48	FEMALE	1,147 (34.85%)
CLUB CANCELLED	33	<a href="#">CLICK HERE FOR HEALTH ASSESSMENT DATA</a>	
OTHER	529	FAMILY UNIT MEMBERS	516
TOTAL	610	HEAD OF HOUSEHOLD	252
		NON-HEAD OF HOUSEHOLD	264